

PEDAL POWER!

Newsletter of the Bay View Bicycle Club (BVBC)

VOL. 20 NO. 9

www.bayviewbikeclub.org

September/2008

Celebrating Twenty Years of Fun!

Comments from the Prez

Comments from the back of the pack.

Hi Everyone! We have had some great weather for the fall rides this year. I see that there are several members that haven't been on a ride with us this year. If you haven't been out with us for a ride I'd like to invite you to join us before the season ends. Lots of interesting things to see and people to meet when you ride with us.

We are working on the October award night and hope that you choose to join us for this special occasion. This is when we get a chance to laud the efforts of those that added to the character of the club during the year. Who will get the prestigious "Turtle Award"? Will we have a winner for the "Most Flat Tires" again? Who will win "Rookie Rider of the Year"?

We'll be having our usual fare will like to see you there.

See you on a ride.

Dan

BVBC Board Members

President	Dan Krall 414-687-2757 getinolder@yahoo.com
Vice President	Clare Beachkofski 414-228-0929 clarebeach@yahoo.com
Secretary	Jeff Schmidt 414-761-3194 Bentguy61303@aol.com
Treasurer	Dan Gannon 262-673-7686 danielg@warshafsky.com
Ride Committee Chair	Kent Kelly 414-423-0236 knkelly@wi.rr.com
Social Committee Chair	Corrado Cirillo 414-758-0296 ccirillo@wi.rr.com
Membership Chair	Debra Tuckwood 414-259-0387 datuckwood@milwpc.com
Newsletter Editor	Pat Peterson 414-771-5526 bethandpat@wi.rr.com

Standing Committees

Web Master	Ron Santoro 414-453-8636 bikerron@bayviewbikeclub.org
Nominating	Dick Knepper 414-744-5315 rknepper@aol.com
Nominating	Gil Krueger 262-797-8448 MRGGK@hotmail.com

BVBC Hotline

For up-to-the-minute information about rides, special events, and meetings, call the **BVBC Hotline: 414-299-0317**

Hotline Manager Linda Roessl
roessl@hotmail.com

Club Meetings

Club meetings are held at **7 P.M. on the third Monday** of each month (no meetings November, December, and January) at the Beulah Brinton Center, 2555 S. Bay St., Milwaukee (Bay View). Our meetings are open to the public and everyone is welcome!

September 2008 Meeting – Alderman Visit and Update on the City of Milwaukee Bicycle Plan

Our guests at the September 15, 2008 BVBC meeting will be Alderman Tony Zelinski and Dave Schlabowske, Coordinator of the Milwaukee Bicycle and Pedestrian Task Force. Alderman Zelinski will update us on issues related to biking. Dave Schlabowske will tell us about the work that's currently underway to update the Milwaukee Bicycle Plan that was developed in 1992. He'll also talk about pedestrian issues, including the State law related to pedestrian rights. Come to the meeting on **Monday, September 15 at 7pm** at the **Beulah Brinton Center** (2555 S. Bay St., Milwaukee, WI (Bay View)) to hear how the Milwaukee Bicycle Plan will impact you, and learn about pedestrian rights and the responsibilities of motorists (and bikers).

October 2008 Meeting – Dinner, BVBC Election of Board Members and Annual Awards

Don't miss the BVBC membership meeting on **Monday, October 20, 2008!** Not only is this the last meeting of the year, but it's also the most important and fun one. The first order of business will be a delicious dinner, provided free of charge to current members,

in recognition of their contributions to the Club this season. The menu consists of appetizers, pizza, salad, and dessert. Following dinner will be the Club's business meeting and the election of Board members. Last but not least will be the presentation of the annual BVBC Awards to members for their accomplishments during the 2008 biking season (every member in attendance will receive an award!). Mark your calendars for this members-only meeting on **Monday, October 20, 2008 at 6 p.m.** at the Beulah Brinton Center (2555 S. Bay St., Milwaukee, WI (Bay View)).

Newsletter Articles

Members are encouraged to submit articles for the newsletter. Copyrighted material must include the author's name and permission to reprint. Please submit articles in MS Word-formatted files.

Horicon Marsh Up Close

On our ride around the marsh on August 17, there is an option to take the wild goose trail. Riding along the trail I noticed a sign saying Horicon Marsh. Following this paved trail lead to the marsh and the Horicon Turnpike. This is a one way paved road 3.2 miles long that gets you close to the marsh where you can stop and check out the wildlife. There is also a 2.5 mile hiking trail to explore. Old Marsh Road is an old road that cuts directly thru the marsh and is about 3 miles long one way. Part is paved with the grass coming up thru the blacktop and the rest is gravel. You may want to walk your bike. Lots of frogs were jumping all over this road. While I was riding on Old Marsh Road, I met 20 people from the Fox Valley Bike & Ski Club from the Chicago area. They were spending the weekend in Wisconsin riding around Watertown. I put on an extra 10 miles checking everything out. Special thank you to Norm & Prati and Pat & Beth for looking for me because I was so late getting back.



I know it's hard to believe, but the Milwaukee Jingle Bell 5K Run/Walk for Arthritis is just around the corner! It is a fun and festive way to kick off your holidays by helping others. We look forward to seeing you again at this year's Jingle Bell Run, which will be held on **Sunday, November 9, 2008** at the Milwaukee County Zoo. We plan to enter as a team again and hope to encourage even more members to join us this year. Dress in holiday style and walk, or run, with our team and the thousands of participants with jingle bells tied to their shoelaces in support of the Arthritis Foundation. Arthritis will affect most of us to some degree sometime, so it behooves us to support the research efforts of the Foundation and their mission to prevent, control and cure arthritis and related diseases. Don't wait and complain of aches and pains when you're older when you could support research now that might make things easier for you later. Jingle Bell Run/Walk details may be found at: www.jbrmilwaukee.kintera.org. We will have a sign-up sheet at our September meeting. You can also contact me to sign-up for our team: Sandra Gannon, work #414-276-4970, home #262-673-7686, email: sandrag@warshafsky.com. The team registration deadline is October 20, 2008. The \$25 registration fee gets you an official event t-shirt, gloves, jingle bells, and goody bag. Free food is served following the Run/Walk and in the past has included soup, sandwiches, cookies and fruit. Please encourage your friends and family members to come along. The more the merrier, especially at holiday time!

September Social

Come join your fellow BVBC members, friends and family for a taste of old fashioned pizza. The old Cataldo's from Brady Street has reopened in Bay View.

Where:

Cataldo's on KK
2860 South Kinnickinnic Avenue
Milwaukee, Wisconsin 53207
(414) 483-0677

When:

Saturday
September 27, 2008
6:00 pm

RSVP Corrado Cirillo by September 25, 2008 at
ccirillo@wi.rr.com

Otherwise, we hope you will give our new routes a try. This is a picnic ride, so don't forget that some tasty food will be your reward after your ride. Please contact Sam Gannon to coordinate your dish-to-pass, at 262-673-7686, or email: sandrag@warshafsky.com.

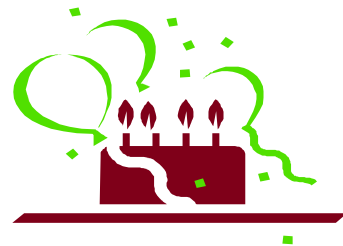
Membership Report

by Debra

We have a membership total of 118. We have 113 adults, and 5 children. We have four new members for the month.

Welcome new members

Becky White
Colleen Shields Bear
Dan Gilipsky
Jeff Hartford



GO BY BIKE



We know club members love to ride their bikes for fun and fitness. But how many of us use our bikes for transportation? 40% of car trips are under 2 miles, a distance easily covered by bike. Whether it's for the health of our body, our community or the environment, cycling is a great way to get around. Make a commitment to make at least one commute, errand or short trip a week by bike.

WHEELANDSPROCKET.COM Wheel & Sprocket

Name	BirthDate
Patricia Pomahac	October 3
Walter Pretzel	October 5
Donna Pogliano	October 10
Janet Taylor	October 12
Joe Safranski	October 12
Kent Kelly	October 14
Tom Simonson	October 15
Pauline Ellington	October 15
Jeff Hartford	October 16
Debra Tuckwood	October 19
John Jr Poznanski	October 19
Kairy Ibrahim	October 21
Joseph Soriano	October 25
Jennifer Kovatovich	October 28
Mike Kautzer	October 30

NEW ROUTE for Sam's Fall Colors Ride Sunday, October 5, 2008

We are heading west on our new route where it is less hilly and has a rest stop in Neosho. We found a flat route into Neosho, from the southwest, avoiding the hills of the northeast approach. We will have two routes, 29-miles and 41-miles and both are entirely in the country where you will be surrounded by beautiful fall colors. If someone really wants to ride the old routes, we will have those maps available.

Ride Chair, Ride
Kent Kelly

Remember that **Dick's Chili Ride** on **October 12** starts at **12:00** because the game's at 3:15.

Another reminder; our rides start at 10:00 AM in October.

Important!

I need all sign-up sheets turned into me as quickly as possible after a ride.

September is a critical month because, obviously, it is so close to October. And Pat Peterson, Newsletter Editor, needs the counts early in October. And, we need an accurate tally for our October Awards Banquet.

If I'm not at the ride, please put the sign-up sheet in an envelope and mail it to me. My address is: 5611 Churchway, Greendale, WI 53129. Scanning and e-mailing would work as well. You can return the ride packets later.

We can always use Ride Leaders. Talk to me about the duties and rewards then volunteer.

Keep your chain oiled and your brakes clean. I'll see you on the road.

Contact me, Kent Kelly:

1. At our monthly meeting
2. By e-mail: knkelly@wi.rr.com (please include BVBC in the subject line)
3. By phone: 414.423.0236 (home - you can leave a message)
4. On a ride

Thanks, and remember, every ride is tentative until ridden; check our website; call our hotline.

Saturday, September 13, 2008

Brown Deer to Cedarburg. Fairly easy ride, mostly rural areas through River Hill, Mequon and Cedarburg. Ride Distance 26 or 34 miles. Starts at Brown Deer Park. Take I-43 north to Good Hope Rd., west to Teutonia Ave., right on Teutonia (approximately 1/2 mile), right on

Calumet. Cross RR tracks, turn left at stop sign. Park in lot on the right.

Sunday, September 14, 2008

Zoo Ride. Ride on the Wild Side. Serve as route marshals. Ride Distance 17, 27 miles. September rides start at 9am; October rides start at 10am

Saturday, September 20, 2008

Maywood Earth Ride. Fund raiser ride with five scenic routes through Sheboygan County to benefit the Ellwood May Environmental Park. Ride Distance 25, 50 or 64 miles. Take I-43, exit #128 go southeast 1.1 mile on Hwy 42. Turn right on Mueller Road; park entrance is 0.2 mile on left. For more details check out the website: www.gomaywood.org

Saturday, September 20, 2008

Cool Doctor. Ride west on the New Berlin Recreational Trail, through Waukesha to the Glacial Drumlin Trail, and on to Dousman. Return same route. Turn a-round in Waukesha or Wales, or Dousman. Ride Distance 20, 35 or 46 miles. Starts at Greenfield Park. Take I-894, exit at Greenfield Ave. Go west to 124th St. Turn Left on 124th and left into park at the Cool Waters Sign. Park in the north lot across from the Cool Waters Pool.

Sunday, September 21, 2008

Pedal the Kettle. Annual Spring City Cycle Club ride (registration fee required). Ride Distance 30, 60 or 100 miles. Start at Meadowbrook School. Take I 94 west to Cty Hwy G (exit 291), go left on Hwy G, turn left on Rolling Ridge Drive to Meadowbrook School. www.springcityspinnners.org Club hotline (414) 279-9135.

Saturday, September 27, 2008

Delafield Lake Country. Scenic ride through lake country around Delafield, long route passes near Holy Hill, Pike Lake and Hartford. Ride Distance 20, 29 or 57 miles. Starts at Cushing Park. I-94 west to County C (Delafield), left (north) on C 0.4 miles to Main St. Left (west) on Main St. 1/2 mile to Cushing Park Rd. (by Kurts Steak House), right on Cushing Park Rd. 1/5 mile to parking lot just across bridge. Approximate drive

time: 25 minutes from Zoo.

Sunday, September 28, 2008

Burlington Roll. Easy ride between Wind Lake and Burlington. Ride Distance 23, 33 or 50 miles. Starts at Heg Park. Take WI 36 (Loomis Rd) south towards Wind Lake. Heg park is approximately 1 mile past Wind Lake, watch for signs on the right.

Saturday, October 04, 2008

LaGrange - Whitewater. Scenic ride through Southern Kettle Moraine between LaGrange and Whitewater. Ride Distance 30 or 56 miles. Starts from LaGrange General store. Take I-43 southwest to East Troy. West on WI 20 to US 12. West on US 12 to LaGrange. Park in the lot at the intersection of US 12 and Cty. H. Approximate drive time: 50 minutes

Sunday, October 05, 2008

Sams Fall Color Ride. Club members only, bring a dish to pass, Scenic ride with rolling hills through Kettle Moraine area around Holy Hill. Ride Distance 30 miles. Call Sam @ (262) 673-7686 by the Friday before the ride to RSVP and to get directions.

Saturday, October 11, 2008

Gils Ride to Rome. Scenic ride through farming country to Rome and back. Ride Distance 23, 41 or 50 miles. I-94 west exit Hwy 67. Go left 3.4 miles to Sunset (Hwy 18). Turn right on Sunset, go half mile to Main St.. Turn left on Main .8 mile to Dousman Public lot. Use parking lot on east side of Main St. Approximate drive time: 40 minutes from Zoo.

Sunday, October 12, 2008

STARTS AT NOON!!! Dicks Chili Ride. Club members only, bring a dish to pass. Ride Distance 20 miles. Call Dick @ (414) 744-5315 by the Friday before the ride to RSVP and to get directions to his house

Saturday, October 18, 2008

Northern Kettle Moraine. Very scenic ride through Northern Kettle Moraine state forest. Short route is fairly easy, longer routes are moderately hilly. Ride Distance 20, 31 or 44 miles. Starts from Mill Park in Dundee. Take I-94 west to US 45. North on US 45 to WI 67 (approximately 7 miles past Kewaskum). East

on 67 to Dundee. Park in lot behind the Hamburger Haus. Approximate drive time: 55 minutes from Zoo.

Sunday, October 19, 2008

South Hills. Easy ride from South Hill golf course in Racine. Long route goes west towards Burlington and Eagle Lake. Short route east to Franksville. Ride Distance 23, 35 or 52 miles. Starts at South Hills Golf Course. Take I-94 south to County K, exit on K, take east frontage road 1.5 miles south to golf course. Approx drive time :25 minutes from Zoo.

Saturday, October 25, 2008

Chucks Breakfast Ride. Easy ride through River Hills and Mequon. Stop at Chucks for breakfast afterwards at 406 N. Main St. Ride Distance 34 miles. Starts at Village Park in Thiensville. Take I-43 north to Mequon Rd. West on Mequon Rd (approximately 3 miles). Right on N. Cedarburg Rd/Main St. (approximately 1/2 mile). Right on Green Bay approximately 1 block, right on Elm to Village Park.

Sunday, October 26, 2008

Ozaukee Interurban Trail. Easy ride on the Ozaukee County Interurban. Ride Distance 30 miles. Starts at Logemann Community Center, 6100 W Mequon Rd. Take I-43 north to Mequon Rd (Exit 85). West on Mequon Rd just over 3 miles and turn Right into the Community Center.

Rider Point Totals

1-Oct-2007 through 31-Aug-2008

(some rides missing)

Schmidt, Jeff	1344
Roessl, Linda	1273
Beachkofski, Clare	1160
Santoro, Ron	1016
Wojtal, Norm	1014
Wojtal, Prati	952
Demian, Milad	934
Tuckwood, Debra	917
Peterson, Beth	880
Michalets, Ellen	861
Peterson, Pat	716
Krall, Dan	702
Hepp, Bill	697
Soriano, Joseph	695
LaFave, John	574
Tumey, Carol	525
Meilicke, Dennis	515
Labinski, Dennis	473
Krueger, Gil	468
Gannon, Sandra	464
Lucas, Mary	433
Craig, Michael	387
Gannon, Dan	374
Krueger, Nancy	362
Orosa, Jojo	357
Safranski, Joe	354
McKnight, Russ	339
Gibbs, Tamara	323
Grendysa, Betty	314
Lalor, Tierney	311
McKnight, Janie	298
Katzfey, David	297
Sericati, Tom	295
Polk, Bob	284
Karr, Nancy	277
Pier, Barb	277
Katzfey, Delvina	275
Kuhs, Kelly	275
Nelson, Tom	273
Lewis, Mitch	245
Dix, Michael	237
Mamayek, Jimmy	214
Kelly, Kent	187

Malcolm, Jim	187
Knepper, Dick	180
Gresl, Lois	171
Earle, Sandy	160
Klein, Robert	157
Jackson, Will	156
Burill, Alan	152
Simonson, Tom	150
Kautzer, Jason	130
Kautzer, Michael	130
Moch, Kim	130
Mathers, Russ	125
Stachowiak, Sr, Keith	125
Poznanski, John	111
Pretzel, Walt	109
Cirillo, Corrado	100
Fannin, Deb	100
Kautzer, Doug	100
Kautzer, Kathy	100
Kautzer, Tiffany	100
Mallman, John	100
Pogliano, Donna	100
Reback, Gigi	100
Grenz, Judy	92
Hickman, Tina	88
Hoecherl, Crystal	75
Wargolet, Robert	72
Johnson, David	71
Haney, Penney	63
Bivens, Bob	56
Bivens, Katie	56
Pomahac, Pat	49
Butters, Gary	40
Kelly, Nancy	38
Peterson, Jenny	32
Ellington, Pauline	25
Stachowiak Jr, Keith	25
Ibrahim, Kairy	24
Franzen, Jim	23
Fischer, Harry	22
Lueck, Mike	22
Remlinger, George	22
Delgado, Mary	13



**Glendale Milwaukee
Menomonee Falls**

Show your BVBC membership card and receive 15% discount on regular priced accessories and labor.

Look for info and coupons at www.emerys.com.

Buy local! Our prices are competitive with the Internet and mail-order!


bike
wisconsin.com
Sign up online to win prizes!

2008 TOURS

GRABAWR June 23-30

Great biking along the beautiful Wisconsin River

SAGBRAW July 29-August 3

Scenic back roads cycling for the whole family

BIKE NORTHWOODS July 7-14

Small and personal tour with plenty of smiles.

LOIRE VALLEY July 16-28

Chateaux visits, Tour de France, French cuisine and Paris

New WISCONSIN WEEKENDER June 6-8

Learn. Ride. Repeat

Contact: info@bikewisconsin.com • 608.843.8412

Bay View Bicycle Club, Inc.

P.O. Box 070455

Milwaukee, WI 53207
