

PEDAL POWER!

Newsletter of the Bay View Bicycle Club (BVBC)

VOL. 20 NO. 2

www.bayviewbikeclub.org

Feb/2008

Celebrating Twenty Years of Fun!

Comments from the Prez

by Dan Krall

Comments from the back of the pack.

I started taking spin classes so the comments might be coming from the middle of the pack rather than the back, we'll see. We're starting to gear up for the biking season. There are programs being planned to keep our meetings interesting and informative. The Ride Schedule is being planned. We were asked to Marshall the "Ride for the Arts" so we will need a volunteer to coordinate that effort. Our social chair is planning events. The membership committee is keeping our roster up to date. We'll need to start planning for the Bike EXPO. We're starting to plan the "2008 Lake Country Classic". AND, the newsletter editor is working hard to keep us informed. There are a lot of things going on in winter for a summer bike club. Many hands make light work.... Volunteer.

Dan

BVBC Board Members

President	Dan Krall 414-687-2757 getinolder@yahoo.com
Vice President	Clare Beachkofski 414-228-0929 clarebeach@yahoo.com
Secretary	Jeff Schmidt 414-761-3194 Bentguy61303@aol.com
Treasurer	Dan Gannon 262-673-7686 danielg@warshafsky.com
Ride Committee Chair	Kent Kelly 414-423-0236 knkelly@wi.rr.com

Social Committee Chair	Corrado Cirillo 414-758-0296 ccirillo@wi.rr.com
Membership Chair	Debra Tuckwood 414-259-0387 datuckwood@milwpc.com
Newsletter Editor	Pat Peterson 414-771-5526 bethandpat@wi.rr.com

Standing Committees

Web Master	Ron Santoro 414-453-8636 bikerron@bayviewbikeclub.org
------------	---

Nominating Dick Knepper
414-744-5315
rknepper@aol.com

Nominating Gil Krueger
262-797-8448
MRGGK@hotmail.com

BVBC Hotline

For up-to-the-minute information about rides, special events, and meetings, call the **BVBC Hotline: 414-299-0317**

Hotline Linda Roessl
Manager roessl@hotmail.com

Bay View Bicycle Club © 2008

Club Meetings

Club meetings are held at **7 P.M. on the third Monday** of each month (no meetings November, December, and January) at the Beulah Brinton Center, 2555 S. Bay St., Milwaukee (Bay View). Our meetings are open to the public and everyone is welcome!

Come One, Come All to the First BVBC Meeting of 2008 (February 18)!!

The first membership meeting of 2008 will be **Monday, February 18, 2008 at 7pm** at the Beulah Brinton Center, 2555 S. Bay St., Milwaukee (Bay View). This is a great opportunity to re-connect with members whom you may not have seen since last season, and to get psyched for the upcoming biking season! After the business meeting, Kent Kelly, Ride Chairperson, will review the 2008 proposed ride schedule. Following that discussion, we'll have the first in a series of basic bike maintenance clinics. This one will be a demonstration of how to fix a flat tire, an important skill for anyone who rides a bike. It'll be a hands-on demo, so we encourage everyone to bring the front wheel from their bike. If you have tire levers and a tire pump (floor or

portable), please bring those too. Regardless of your expertise changing a tire, this will be a good pre-season refresher. Hope to see you all at the meeting!

March 2008 Meeting - Shop 'til You Drop at Wheel & Sprocket

The Bay View Bike Club March membership meeting (for members only) will be held at the Wheel & Sprocket Hales Corners store (5722 S. 108th St., Hales Corners) on **Monday, March 10 at 7pm.**

Note: This meeting, on the 2nd Monday (March 10) instead of the 3rd, is a change from the usual monthly meeting schedule.

After the business meeting and a short bicycle maintenance clinic, you're free to wander thru the store and check out the latest in bikes, accessories, and apparel. Take advantage of this pre-biking-season opportunity to re-energize your life with some new jerseys, shorts, inner tubes, tires, wheels, and maybe even a new bike! And remember – Thanks to the generosity of Wheel & Sprocket, every item you purchase that evening is eligible for the W&S discount!

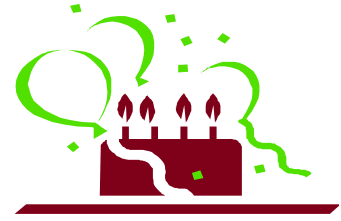
Newsletter Articles

Members are encouraged to submit articles for the newsletter. Copyrighted material must include the author's name and permission to reprint. Please submit articles in MS Word-formatted files. ***Thanks to all the members who submitted articles in 2007!!***

February Social

Come join your fellow Bay View Bicycle Club members for a taste of good food and good beer at Milwaukee's first modern brew pub.

Where: Water Street Brewery
1101 N. Water Street
Milwaukee, WI 53202
(414) 272-1195



Celebrate your birthday with fellow members by bringing **treats** to the monthly meeting!

When: February 23, 2008
Saturday
5:30 p.m.

RSVP Corrado Cirillo at
ccirillo@wi.rr.com or (920) 449-5148.
Deadline for RSVP is February 21, 2008.

February Birthdays

Name	BirthDate
Dan Wiken	February 2
Nancy Kelly	February 2
Arlene Margraf	February 6
Thomas Sericati	February 8
Steve Fishman	February 16
Lorraine Radtke	February 18
Kimberly Moch	February 19
Beth Peterson	February 21
Mary Lucas	February 26
Betty Grendysa	February 26

Membership Report

by Debra

Our current membership is 118, 114 adults and 4 children. Welcome New Member Tina Hickman

Ride Chair, Ride
by Kent Kelly

Ride Chair, Ride
Kent Kelly

The rider point totals have changed as a result of two rides: one from last October that went missing for a while and the four intrepid riders on the Polar Bear Ride. Better weather a-comin'.

Picnic Rides. Yes. If you want to host a picnic ride, please contact me as soon as possible. While I'll add a picnic ride at any time (well, within reason; a month or so advance notice at least), scheduling goes much easier the earlier I know about your plans. Thanks.

Our March ride is Sunday, 16 March 2008 (details on the Ride Schedule) marking St. Patrick's Day Ride. We can work off the "green" beer from the Parade Day before. March also has this year's Bike Expo and we'll need volunteers to staff our booth. It's a pleasant time; talking with people about our Club; hearing folks comment on our Classic Ride; chatting with booth mates. Be sure to sign up for a time slot.

Keep your chain oiled and your brakes clean. I'll see you on the road.

Contact me, Kent Kelly:

1. At our monthly meeting
2. By e-mail: knkelly@wi.rr.com (please include BVBC in the subject line)
3. By phone: 414.423.0236 (home - you can leave a message)
4. On a ride

Thanks, and remember, every ride is tentative until ridden; check our website; call our hotline.

!!!! April Schedule Is Tentative !!!!

All Rides Start at 10 am

Sunday, March 16, 2008

St Paddys Ride. It is St. Patricks Day so help us spin those snakes out of town then stop for coffee afterwards. Ride Distance 16 miles. Starts at 5-Star Coffee located on Rawson Ave just east of 76th St on the north side of the road. Park way in back.

Wednesday, March 19, 2008

Wheel & Sprocket Expo. Volunteer your time at the BVBC booth. Held at State Fair Park located at 84th and Greenfield.

Thursday, March 20, 2008

Wheel & Sprocket Expo. Volunteer your time at the BVBC booth. Held at State Fair Park located at 84th and Greenfield.

Friday, March 21, 2008

Wheel & Sprocket Expo. Volunteer your time at the BVBC booth. Held at State Fair Park located at 84th and Greenfield.

Saturday, March 22, 2008

Wheel & Sprocket Expo. Volunteer your time at the BVBC booth. Held at State Fair Park located at 84th and Greenfield.

Saturday, April 05, 2008

Whitnall Park to Greenfield Park. Easy ride following the Oak Leaf trail. Ride Distance 20 miles. Starts at Whitnall Park Golf Course on 92nd Street just north of Rawson Ave.

Sunday, April 06, 2008

Hoyt Park. Suburban ride through Elm Grove, Brookfield and Pewaukee. Ride Distance 22 or 38 miles. Starts at Hoyt Park. Take I-94 west to US 45, north to Watertown Plank Rd. (at end of ramp continue straight on Swan Blvd). Stay to the right, road heads North / Northeast. Entrance to Hoyt Park is about one mile on the right.

Saturday, April 12, 2008

Pewaukee Trek. Fairly easy ride, mostly rural areas around Pewaukee, Merton, Chenequa, Delafield and Hartland. Joint ride with Spring City Spinners. Ride Distance 19 or 34 miles. Starts at WCTC in Pewaukee. Take I-94 west, right on WI 16. Exit at WCTC/Main St. Turn left across bridge, go straight in to WCTC parking lot. Approximate drive time: 15 minutes from Zoo.

Sunday, April 13, 2008

Greenfield SW. Rural ride going through Muskego, New Berlin and Windlake. Ride Distance 24 or 44 miles. Starts at Greenfield Park. Take I-894, exit at Greenfield Ave. Go west to 124th St. Turn Left on 124th and left into park at the Cool Waters Sign. Park in the north lot across from the Cool Waters Pool.

Saturday, April 19, 2008

Whitnall South. Easy ride into Racine county and back. Ride Distance 22, 37 or 58 miles. Starts at Whitnall Park Golf Course on 92nd Street just north of Rawson Ave.

Sunday, April 20, 2008

Cool Doctor. Ride west on the New Berlin Recreational Trail, through Waukesha to the Glacial Drumlin Trail, and on to Dousman. Return same route. Turn around in Waukesha or Wales, or Dousman. Ride Distance 20, 33 or 44 miles. Starts at Greenfield Park. Take I-894, exit at Greenfield Ave. Go west to 124th St. Turn Left on 124th and left into park at the Cool Waters Sign. Park in the north lot across from the pool area.

Saturday, April 26, 2008

Windlake. Ride around Windlake and Big Muskego Lake, fairly flat, mostly rural route. Ride Distance 21 or 34 miles. Starts at Hales Corners Park. Take I-43/894 to Forest Home Ave., south west on Forest Home (WI 24) to Janesville Rd. (WI 24), west on Janesville to 116th St. North on 116th St. Left on New Berlin Rd. to parking lot on left.

Sunday, April 27, 2008

River Hills Roll. Improved route through River Hills, Mequon and Bayside. Ride Distance 26 or 35 miles. Starts at Kletzsch Park. Take I-43 north to Good Hope Rd. Go west one mile to Milwaukee River Pkwy. South in Pkwy approximately one mile to parking lot on west side.

Rider Point Totals

1-Oct-2007 through 31-Jan-2008

Peterson, Beth	250
Hepp, Bill	245
Roessl, Linda	238
Beachkofski, Clare	203
Wojtal, Norm	202
Schmidt, Jeff	191
Peterson, Pat	185
Santoro, Ron	148
Craig, Michael	146
Wojtal, Prati	140
Krall, Dan	135
Soriano, Joseph	123
Lucas, Mary	120
Tuckwood, Debra	115
Polk, Bob	96
Noll, Elaine	94
Noll, Mike	94
Labinski, Dennis	86
Meilicke, Dennis	85
Tumey, Carol	85

Orosa, Jojo	64
Krueger, Gil	63
Gresl, Lois	56
Kuhs, Kelly	55
Krueger, Nancy	53
Gannon, Sandra	42
Sericati, Tom	42
John, Emily	34
Gannon, Dan	32
Grendysa, Betty	31
Mamayek, Jimmy	31
Pretzel, Walt	31
Hickman, Tina	30
Knepper, Dick	30
Safranski, Joe	25
Simonson, Tom	25
Kelly, Kent	21
Kaniecki, Dale	20
Karr, Nancy	20
Pier, Barb	20
Poznanski, John	20

BIKE EXPO 2008 

- 1500 Bikes fully assembled, ready to ride
- 1000s of accessories on sale
- Tons of closeouts - direct from the TREK warehouse 
- Nike Shoes/Clothing - 50% OFF! 

FREE ADMISSION! 

WEDNESDAY MARCH 19 4pm - 9pm	THURSDAY MARCH 20 4pm - 9pm	FRIDAY MARCH 21 10am - 9pm	SATURDAY MARCH 22 10am - 6pm
---	--	---	---

WI. EXPOSITION CENTER
STATE FAIR PARK

 Wheel & Sprocket



CRANK DADDY'S
BICYCLE WORKS

10% OFF
All regularly priced apparel and accessories for **Bayview Bike Club Members**

SPECIALIZED, ORBEA, MOOTS, LOOK, ELECTRA, MARIN
INDOOR COMPUTRAINER TRAINING FACILITY
2108 N FARWELL MILWAUKEE WI 53202
414.347.5511 - CRANKDADDYS.COM

The Lapham Peak Friends, an all volunteer organization that helps develop projects at the Lapham Peak State Park in Delafield, WI is having the 3rd Annual Lapham Peak Friends Spring Bike Swap. All proceeds of the Bike Swap go directly to projects at the Lapham Peak State Park. For more information and vendor forms contact John Corbin at wrcgota@execpc.com phone 262-569-9397 or www.LaphamPeakFriends.org


bike wisconsin.com
Sign up online to win prizes!

2008 TOURS

GRABAWR June 23-30
Great biking along the beautiful Wisconsin River

SAGBRAW July 29-August 3
Scenic back roads cycling for the whole family

BIKE NORTHWOODS July 7-14
Small and personal tour with plenty of smiles

LOIRE VALLEY July 16-28
Chateaux visits, Tour de France, French cuisine and Paris

New WISCONSIN WEEKENDER June 6-8
Learn. Ride. Repeat

Contact: info@bikewisconsin.com • 608.843.8412

Emery's
SUPER FITNESS STORES SINCE 1963

Glendale Milwaukee
Menomonee Falls

Show your BVBC membership card and receive 15% discount on regular priced accessories and labor.

Look for info and coupons at www.emerys.com.

Buy local! Our prices are competitive with the Internet and mail-order!