

# PEDAL POWER!

Newsletter of the Bay View Bicycle Club (BVBC)

VOL. 20 NO. 1

[www.bayviewbikeclub.org](http://www.bayviewbikeclub.org)

Dec 2007/Jan2008

## Celebrating Twenty Years of Fun!

### Comments from the Prez

*by Dan Krall*

Comments from the back of the pack.

Welcome to 2008, what a joy to be alive in this season of uncertainty and change. Things that are beyond my control are still beyond my control and learning to understand that relieves a lot of stress. From my point of view it is simply amazing to be here.

We opened the New Year with a bike ride from South Shore to Bradford beach. It was a crisp clear cold day, 24 degrees above zero with the wind from the west at near 12 miles per hour. The goal was to watch the brave (or slightly crazy) people run into 45 degree water with out thermal protection other than perhaps, a few too many cocktails. Riders from our club had a nice ride as the wind was from the west so they had the wind to side both ways. It was very cold but fortunately for the rides there was not a strong blustering headwind.

Corrado will be scheduling a social event for late January, watch your emails.

Wheel and Sprockets Bike expo is coming in March. Please watch for an opportunity to attend the booth. It is a fine place to meet other members, and support our major sponsor.

Kent is working on the ride schedule, if you want to have a picnic ride or be a ride leader on your favorite ride please email or call him.  
Have fun, See you on a ride or at a meeting.

Dan

## BVBC Board Members

President	Dan Krall 414-687-2757 <a href="mailto:getinolder@yahoo.com">getinolder@yahoo.com</a>
Vice President	Clare Beachkofski 414-228-0929 <a href="mailto:clarebeach@yahoo.com">clarebeach@yahoo.com</a>
Secretary	Jeff Schmidt 414-761-3194 <a href="mailto:Bentguy61303@aol.com">Bentguy61303@aol.com</a>
Treasurer	Dan Gannon <a href="mailto:danielg@warshafsky.com">danielg@warshafsky.com</a>
Ride Committee Chair	Kent Kelly 414-423-0236 <a href="mailto:knkelly@wi.rr.com">knkelly@wi.rr.com</a>
Social Committee Chair	Corrado Cirillo 414-758-0296 <a href="mailto:ccirillo@wi.rr.com">ccirillo@wi.rr.com</a>
Membership Chair	Debra Tuckwood 414-259-0387 <a href="mailto:datuckwood@milwpc.com">datuckwood@milwpc.com</a>
Newsletter Editor	Pat Peterson 414-771-5526 <a href="mailto:bethandpat@wi.rr.com">bethandpat@wi.rr.com</a>

## Standing Committees

Web Master	Ron Santoro 414-453-8636 <a href="mailto:bikerron@bayviewbikeclub.org">bikerron@bayviewbikeclub.org</a>
Nominating	Dick Knepper 414-744-5315 <a href="mailto:rknepper@aol.com">rknepper@aol.com</a>
Nominating	Gil Krueger 262-797-8448 <a href="mailto:MRGGK@hotmail.com">MRGGK@hotmail.com</a>

## BVBC Hotline

For up-to-the-minute information about rides, special events, and meetings, call the **BVBC Hotline: 414-299-0317**

Hotline Manager	Linda Roessl <a href="mailto:roessl@hotmail.com">roessl@hotmail.com</a>
-----------------	--

**Bay View Bicycle Club © 2008**

## Club Meetings

Club meetings are held at **7 P.M. on the third Monday** of each month (no meetings November, December, and January) at the Beulah Brinton Center, 2555 S. Bay St., Milwaukee (Bay View). Our meetings are open to the public and everyone is welcome!

**Same time, same place for 2008 Club meetings** - October is the last membership meeting of 2007. The first meeting in 2008 will be on **Monday, February 18, 2008** at the Beulah Brinton Center. Although there won't be Club meetings in November, December, and January, there will be Club rides and events between now and the February meeting. See the *Social Events* and *Ride Schedule* articles for details.

## Newsletter Articles

Members are encouraged to submit articles for the newsletter. Copyrighted material must include the author's name and permission to reprint. Please submit articles in MS Word-formatted files. ***Thanks to all the members who submitted articles in 2007!!***

## Membership Report

*by Debra*

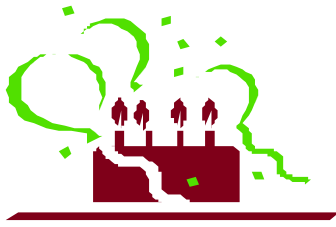
Our current membership is 117. 113 adults and 4 kids

### For Sale

#### **Litespeed Titanium Tuscany**

***(This bike would be a great Christmas gift!)***

55cm with Rolf wheels and Ultegra components.  
One good tire and one very good tire.  
\$2000 or best reasonable offer.  
Contact Dan at [getinolder@yahoo.com](mailto:getinolder@yahoo.com).



Celebrate your birthday with fellow members by bringing **treats** to the monthly meeting!

### January Birthdays

Name	Birth Date
Ron Santoro	January 3
Stephanie Doering	January 7
Milad Demian	January 10
Tierney Lalor	January 10
Sandra Gannon	January 12
Robert Polk	January 14
Amy Fulton	January 18
Harry Fischer	January 20
Sabrina Schmidt	January 24
Adrian Brandes	January 28
Elaine Noll	January 30
Tom Nelson	January 30
Adelheid (Heidi) Aponte	January 30

### **Preview 2008 Ride Schedule and Fix a Flat at the February Meeting**

The February meeting will be on **Monday, February 18, 2008 at 7pm** at the Beulah Brinton Center, 2555 S. Bay St., Milwaukee (Bay View). After the business meeting, Kent Kelly, Ride Chairperson, will review the 2008 proposed ride schedule. Following that discussion, we'll have a demonstration of how to fix a flat tire. Since the best way to learn is by doing, this will be an opportunity for you to get hands-on practice fixing a flat. For some members, this will be a new experience; for others, it will be a review. In any case, fixing a flat is a skill that we encourage every BVBC member to master in 2008! Please bring the front

wheel from your bike, and tire levers and a tire pump (if you have them). If you have any questions, please contact Clare at [clarebeach@yahoo.com](mailto:clarebeach@yahoo.com).

### **March 2008 Meeting - Shop 'til You Drop at Wheel & Sprocket**

The Bay View Bike Club March membership meeting (for members only) will be held at the Wheel & Sprocket Hales Corners store (5722 S. 108<sup>th</sup> St., Hales Corners) on **Monday, March 10 at 7pm**.

*Note: This meeting, on the 2<sup>nd</sup> Monday (March 10) instead of the 3<sup>rd</sup>, is a change from the usual monthly meeting schedule.*

After the business meeting and a short presentation on a bicycle-related topic, you're free to wander thru the store and check out the merchandise. Before the meeting on March 10, do an inventory of your equipment and then take advantage of this opportunity to stock up on and replace much-needed things like jerseys, shorts, inner tubes, tires, and wheels. This is a great time to buy because, as a BVBC member, you're eligible for the W&S discount!

### **BVBC Holiday Party**

The annual Bay View Bike Club Holiday Party!! The party is being planned for January, 26<sup>th</sup> 2008.

The Silver Spur Texas Smokehouse BBQ  
19990 W. Greenfield Ave.  
Brookfield, WI  
(262) 821-1511

RSVP: Corrado at [ccirillo@wi.rr.com](mailto:ccirillo@wi.rr.com) by January 24, 2008 8:00 pm

## **Ride Chair, Ride** *by Kent Kelly*

Oh, boy! Here we go again! I can hardly wait. A brand-new season of thrills and chills with the Bay View Bicycle Club.

I'm getting the schedule in shape for presentation to the Board this month and based on their feedback, I'll present to all members in February. Before we get to that though, I thought a look back would be in order. Here's some of what we did in 2007.

- We rode a total of 41,572 miles.
- 91 members rode 986 rides while 62 guests rode 114 rides (obviously some folks made more than one ride).
- We rode 68 different rides with 10 duplications for a total of 78 rides.

I don't know if there's room in this newsletter for a report I submitted which is an average rider count for our rides for 2006 through 2007. If it doesn't make this newsletter and you want a copy, contact me.

Picnic Rides. Yes. If you want to host a picnic ride, please contact me as soon as possible. While I'll add a picnic ride at any time (well, within reason; a month or so advance notice at least), scheduling goes much easier the earlier I know about your plans. Thanks.

When you read this, the Polar Bear Ride will have come and gone but we have two more rides prior to the full season to whet your appetite (details in the Ride Schedule portion of this Newsletter).

- Saturday, 16 February 2008 is the Sweetheart Ride (all the better for knowing who's your Valentine).

- Sunday, 16 March 2008 is St. Paddy's Day Ride.

Keep your chain oiled and your brakes clean. I'll see you on the road.

Contact me, Kent Kelly:

1. At our monthly meeting
2. By e-mail: knkelly@wi.rr.com (please include BVBC in the subject line)
3. By phone: 414.423.0236 (home - you can leave a message)
4. On a ride

Thanks, and remember, every ride is tentative until ridden; check our website; call our hotline.

## **Rides in February and March**

**\* Rides leave at 10am \***

*(Arrive early so you're ready at the start time)*

### **Saturday, February 16, 2008**

**Sweetheart Ride.** Celebrate Valentine's Day with a ride for coffee (or mocha, latte, cappuccino Grande) (whatever that is!) Ride Distance is 15 miles. Ride starts at Grant Park Golf Course clubhouse. Take I-94 south, exit at College Ave. Go east on the road. Park way in back. College Ave. to Lake Dr. Take Lake Dr. south to Hawthorne Ave., east on Hawthorne

### **Sunday, March 16, 2008**

**St Paddy's Ride.** It's St. Patrick's Day so help us spin those snakes out of town then stop for coffee Ride Distance 15 miles. Starts at 5-Star Coffee located on Rawson Ave just east of 76th St on the north side of

## BVBC Rider Average by Ride for 2006 - 2007

Ride Name	Average	Rides	Ride Name	Average	Rides
Cool Doctor	27	2	Virmond Park	14	2
BVBC Classic Preview	25	2	Chucks Breakfast Ride	14	2
Miller Lite Ride for the Arts	25	2	Whitnall Park to Currie Park	14	2
Cedarburg	22	2	LaGrange - Whitewater	14	2
Hunters Lake Picnic Ride	22	1	River Hills/Grafton	14	2
Past Presidents Day Ride	22	2	South Shore to Gorney Park	13	1
Whitnall Park to Greenfield Park	22	2	Harrington Beach	13	2
Trek 100	21	2	Gils Ride to Rome	12	3
Ottawa Lake	20	2	Windlake	12	4
BVBC Windlake	20	1	New Berlin West	11	2
Tierneys Picnic Ride	20	1	Toms Grant Park Picnic Ride	11	1
Aztalan	20	1	Germantown Roll	10	2
Charlies Memorial Ride	20	2	Ride to Hellenville and Back	10	1
Cream City Century	20	2	Delafield Lake Country	10	2
Oakwood to Oakleaf	19	1	Horicon Marsh	10	2
South Shore to Cliffside	19	1	Dousman Ride	9	2
Whitnall South	19	4	Oakleaf Trail - North Loop	9	1
LaGrange - So. Kettle Moraine	19	2	Parkside	8	2
Burlington Roll	18	3	Tour de Fort	8	2
Greenfield SW	18	4	Scenic Shore 150	7	4
Bettys Booper	18	2	South Hills	7	1
Too Much Turkey Ride	17	2	Classic Preparation Day	7	1
Lake Country Ride	17	1	Zoo Ride	6	2
Polar Bear Ride	17	1	Oakleaf Trail - South Loop	6	1
Dicks Chili Ride	17	2	Audubon Court	6	1
Door County Century	17	2	Glacial Drumlin State Trail	6	1
Menomonee Falls/Neosho	16	1	Hoyt Park	6	3
Oconomowoc-Eagle	16	2	Pewaukee Lake Ride	5	1
Coalition Picnic	16	2	Grant Park	5	2
Brown Deer to Cedarburg	16	2	St Paddys Ride	4	1
Beaver Lake	16	2	Menomonee River Century	4	1
River Hills Roll	15	5	Pedal the Kettle	4	2
Pewaukee TREK	15	2	Chocolate City Bike Ride	4	2
Holland Festival	15	2	Riveredge River Valley Ride	4	2
Sams Fall Color Ride	15	2	Menominee River Century	3	1
Northern Kettle Moraine	15	2	Sweetheart Ride	3	1
Maywood Earth Ride	14	2	MS 150 Best Dam Bike Tour	2	2
Big Cedar Lake	14	2	Bike Federation Ride	1	2
Lake Mills Triangle	14	1	Holy Moly Hills	1	1

  
**bike wisconsin.com**  
 Sign up online to win prizes!



**2008 TOURS**  
**GRABAAWR** June 23-30  
*Great biking along the beautiful Wisconsin River*  
**SAGBRAW** July 29-August 3  
*Scenic back roads cycling for the whole family*  
**BIKE NORTHWOODS** July 7-14  
*Small and personal tour with plenty of smiles*  
**LOIRE VALLEY** July 16-28  
*Chateaux visits, Tour de France, French cuisine and Paris*  
**New WISCONSIN WEEKENDER** June 6-8  
*Learn. Ride. Repeat*  
 Contact: [info@bikewisconsin.com](mailto:info@bikewisconsin.com) • 608.843.8412

  
**Emery's**  
 SUPER FITNESS STORES SINCE 1963

**Glendale Milwaukee**  
**Menomonee Falls**

Show your BVBC membership card and receive 15% discount on regular priced accessories and labor.

Look for info and coupons at [www.emerys.com](http://www.emerys.com).

**Buy local!** Our prices are competitive  
 with the Internet and mail-order!

## Wisconsin Cycling Photo Contest

Do you have photos of bicycling in Wisconsin? If so, we'd love to see them! Your photo could be printed for display at Wheel & Sprocket.

If your photo is chosen, we'll make an enlargement for you to keep, up to 40" x 60". More details and the upload page @ [wheelandsprocket.com](http://wheelandsprocket.com)



**BIKE EXPO 2008**

**SAVE THE DATES**  
**MARCH 19-22**

Live Life. Ride.





# 10% OFF

All regularly priced  
apparel and  
accessories for  
**Bayview Bike Club**  
Members

**CRANK DADDY'S**  
 BICYCLE WORKS  
 SPECIALIZED, ORBEA, MOOTS, LOOK, ELECTRA, MARIN  
 INDOOR COMPUTRAINER TRAINING FACILITY  
 2108 N FARWELL MILWAUKEE WI 53202  
 414.347.5511 - [CRANKDADDYS.COM](http://CRANKDADDYS.COM)



**384-2236**  
 1018 W. Lincoln Ave.  
 Open 7 days a week  
 Mon, Thurs, Fri 10-6  
 Tues, Wed 10-6  
 Saturday 9-4  
 Sunday 10-3

**Milwaukee's Largest Schwinn Dealer**






Over 60 years of service.  
 Huge Parts Inventory

Bikes for the family and the serious enthusiast.

**Exercise Equipment**

- Step machines, treadmills
- Airdyne, stationary bikes
- Weight stack-commercial or home use